



TCEAL3/5/6 Polyclonal Antibody

Catalog No	YP-Ab-02085
Isotype	IgG
Reactivity	Human;Rat;Mouse;
Applications	IHC;IF;ELISA
Gene Name	TCEAL3/5/6
Protein Name	Transcription elongation factor A protein-like 3/5/6
Immunogen	The antiserum was produced against synthesized peptide derived from human TCEAL3. AA range:141-190
Specificity	TCEAL3/5/6 Polyclonal Antibody detects endogenous levels of TCEAL3/5/6 protein.
Formulation	Liquid in PBS containing 50% glycerol, 0.5% BSA and 0.02% sodium azide.
Source	Polyclonal, Rabbit,IgG
Purification	The antibody was affinity-purified from rabbit antiserum by affinity-chromatography using epitope-specific immunogen.
Dilution	IHC: 1/100 - 1/300. ELISA: 1/40000.. IF 1:50-200
Concentration	1 mg/ml
Purity	≥90%
Storage Stability	-20°C/1 year
Synonyms	TCEAL3; MSTP072; Transcription elongation factor A protein-like 3; TCEA-like protein 3; Transcription elongation factor S-II protein-like 3; TCEAL5; Transcription elongation factor A protein-like 5; TCEA-like protein 5; Transcription elonga
Observed Band	
Cell Pathway	Nucleus .
Tissue Specificity	Aorta,Epithelium,Eye,Gastric mucosa,Skin,
Function	function:May be involved in transcriptional regulation.,PTM:Phosphorylated upon DNA damage, probably by ATM or ATR.,similarity:Belongs to the TFS-II family. TFA subfamily.,
Background	This gene encodes a member of the transcription elongation factor A (SII)-like (TCEAL) gene family. Members of this family contain TFA domains and may function as nuclear phosphoproteins that modulate transcription in a promoter context-dependent manner. Multiple family members are located on the X chromosome. Alternative splicing results in multiple transcript variants encoding a single isoform. [provided by RefSeq, Jul 2008],

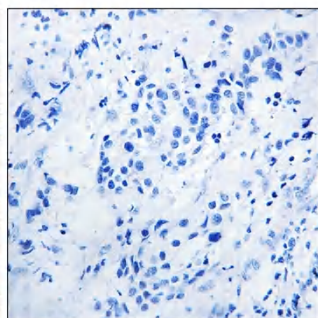
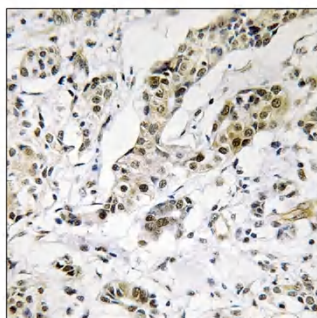
**matters needing attention**

Avoid repeated freezing and thawing!

Usage suggestions

This product can be used in immunological reaction related experiments. For more information, please consult technical personnel.

Products Images



Immunohistochemistry analysis of paraffin-embedded human breast carcinoma, using TCEAL3/5/6 Antibody. The picture on the right is blocked with the synthesized peptide.